

ROUNDING UP THE MOB

... on wheels

More than 30 local horsemen, drivers and backup crew were involved in making a television commercial for the Nissan Motor Company recently.

The commercial was released on July 8 and depicts some light commercial vehicles helping to round up and yard a mob of horses.

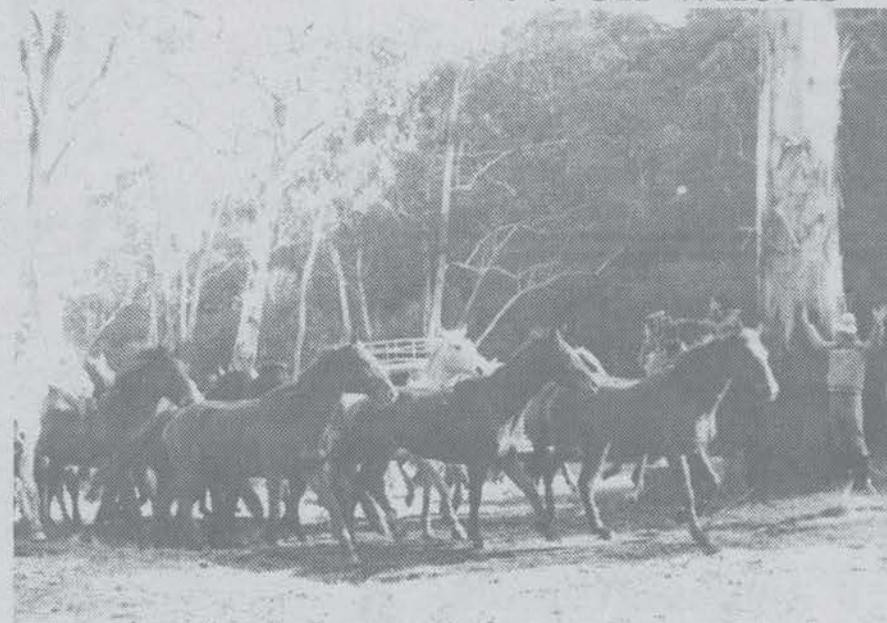
Filming was shot at locations in Merrijig, Howqua and Jamieson and included a paddock owned by the Purcell family at Merrijig.

Mountain cattleman, Charlie Lovick supplied the 32 horses and organised riders to control "the mob" and they appear fleetingly in the film as outriders.

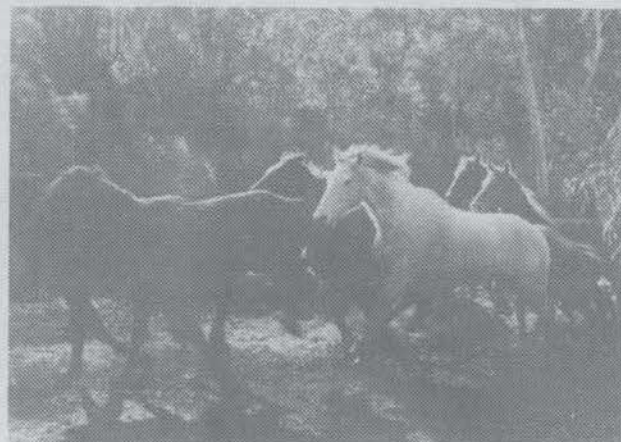
Charlie's father, Jack Lovick led the mob over a large log, at one stage closely followed by one of the four wheel drive vehicles which actually "jumped" the log close behind the horses.

Photos:
Courtesy
Annie Harris

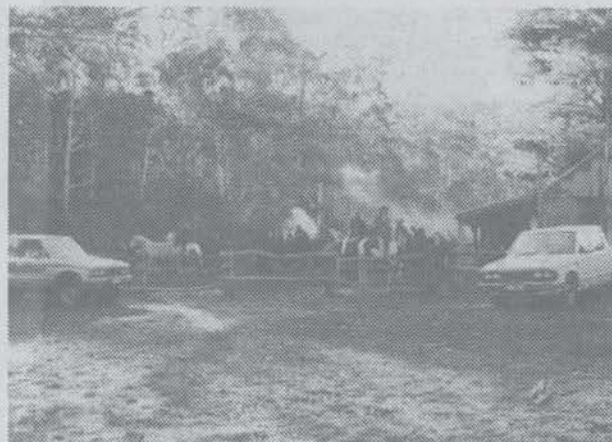
AWAY GO THE HORSES WITH OUTRIDERS, CHARLIE LOVICK AND PHIL ARBUTHNOT IN PURSUIT ...



... PAST THE CAMERAS
LOOK OUT BOYS!



— Over a big log closely followed by a Nissan which also "jumped" the log.



Rounded up at last. Jack Lovick on horseback. Nissans switch off.



The Nissan team at Fry's.