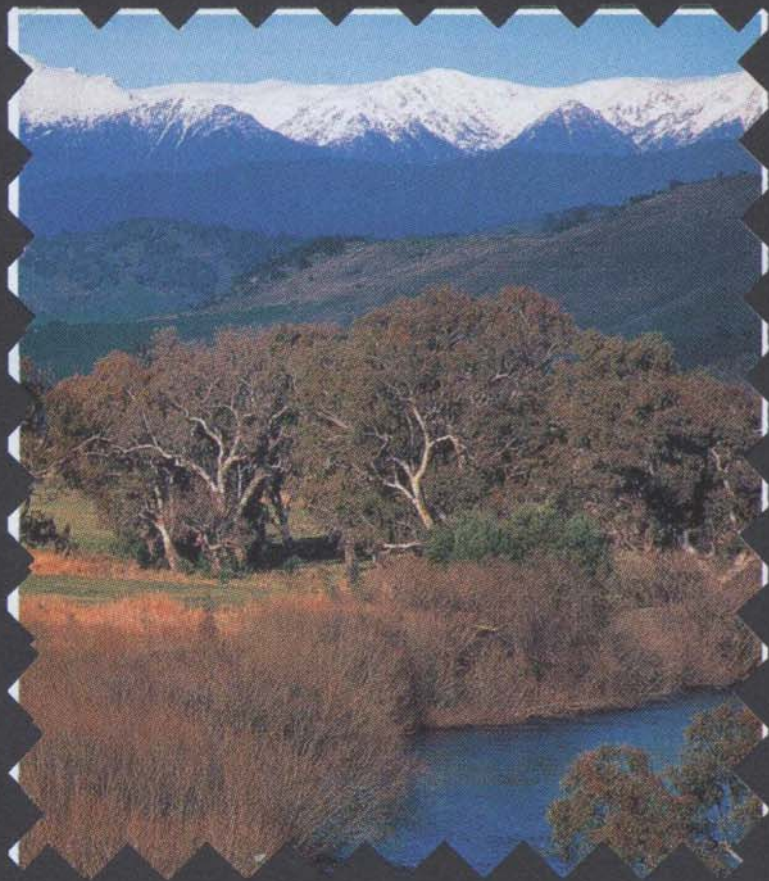






## Pinnacles

A thousand metre drop from the side of the rocky walls of The Pinnacles to the hills below and Wonnangatta Valley is the awesome view awaiting visitors. From the Fire Watching Tower the view extends from Mt Hotham in the north to the Gippsland Lakes in the south.

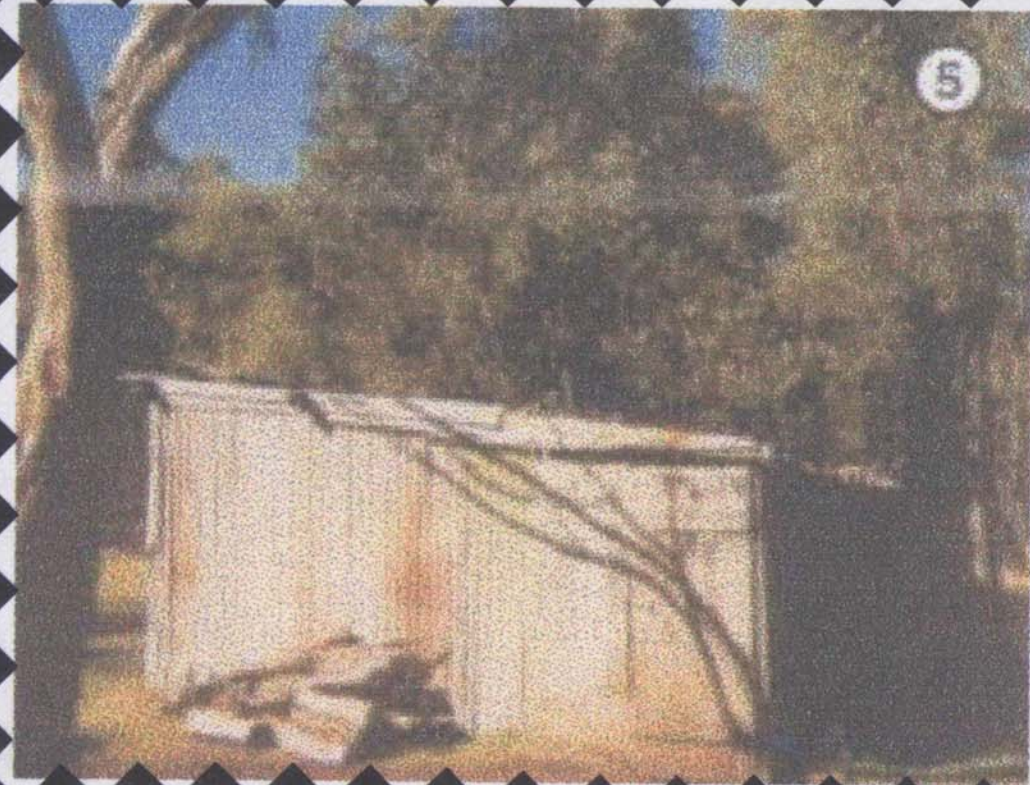


Pinnacle Hut, Pinnacle fire Lookout Point, this hut was rebuilt in the 1980s.

Was first used as a fire lookout in 1962 and has superb views over the Wonnagatta Valley and on a clear day out to Bass Strait. Foot access.

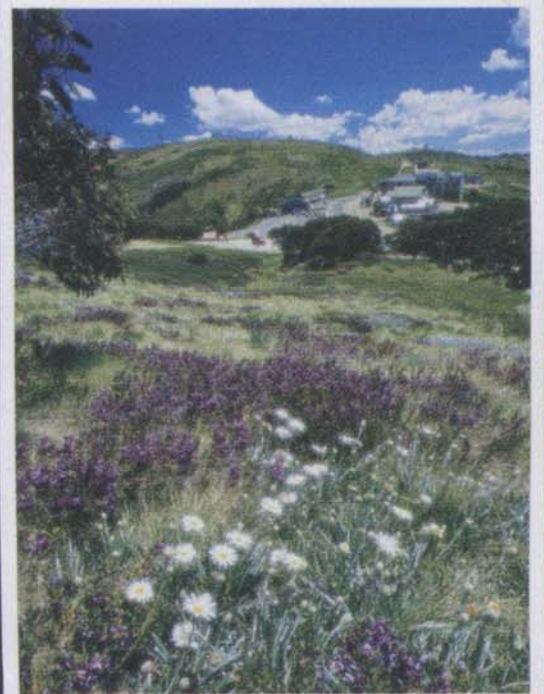
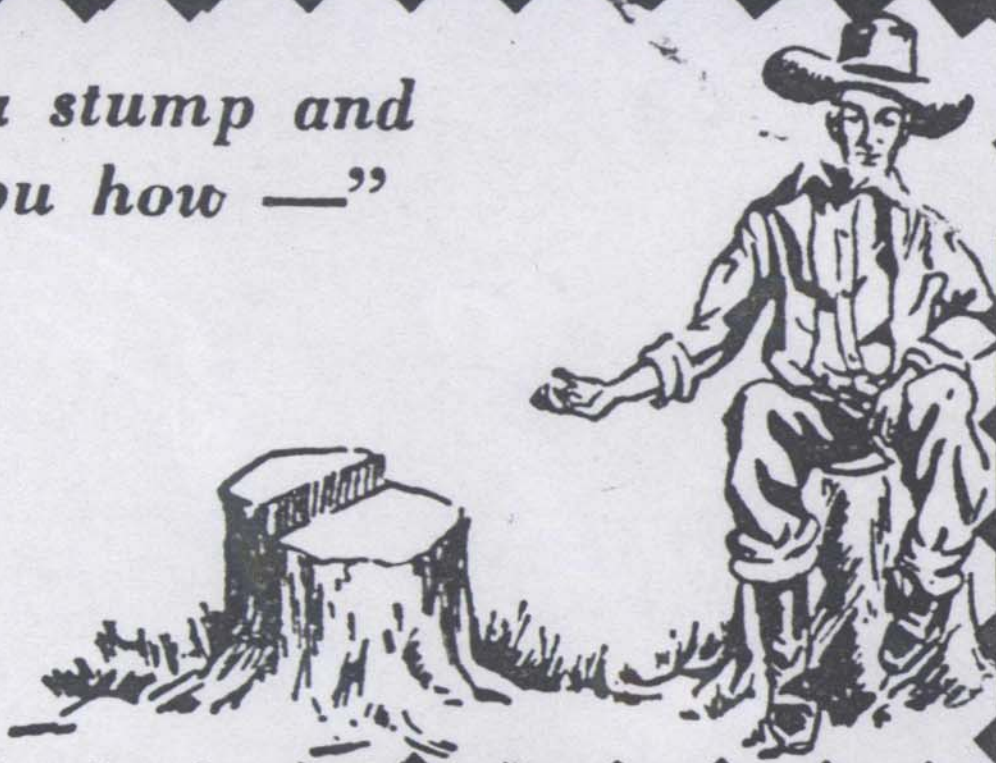


Horseyard Hut is a relatively new hut built by David Freeman in the early 1980s. It is accessible by 2WD.





*“Pull up a stump and  
I’ll tell you how —”*







Kellys' Hut built in 1934 by Jim Kelly and several other cattlemen, the hut was used for grazing purposes and is considered of State significance. 4WD access.



# Bush Huts Around Licola

## The Tour

Depart early from Licola and follow the sealed road for 23 km beside the Macalister/Wellington Rivers. The bitumen finishes at the final river crossing. A small track takes of on a bend on the right side about 300m beyond the bridge. Follow this track for 300m to the Wellington River Hut. Continue along the Tamboritha Spur Road past Bennison Plains Lookout. At Arbuckle Junction, a major T intersection veer right along the Moroka Road for 12 km to McFarlanes Saddle. Follow the lake Tali Karng walking Track for 1.8km to Dunsmuir Hut. It is in an area badly burnt by the 1998 Caledonia fires. Not much remains of one of the huts which was badly burnt the other is in poor condition. Allow 1 hr.

Continue south along the Moroka Road for 5 km to the 1911: Wellington Track takes of on the left. Follow this track past Millers Gap and over Mt. Wellington 1634m to Millers Hut. The track over Mt. Wellington can be rough and has excellent views. For those without a 4wd they could continue walking along the walking track from Dunsmuir Huts for a further 8km. Return to Moroka Road and 6 km further south there is a small car park on the right hand side of the road. It is a 300m walk to Moroka Hut. 7km down the Moroka Road, the turnoff to Horseyard Flat is on the left. About 400m down this track and off to the left is Horseyard Hut. Continue along Moroka Road which becomes steeper and rougher, the road leads to the Pinnacle Fire Tower Car Park.

Then there is a spectacular 100m walk with constructed steps and rail to one of the best views in the district on a clear day the view stretches out to Bass Strait. Return towards Arbuckle Junction there are several suitable campsites along the Moroka River for an overnight stop. Veer left at Arbuckle Junction after 7km turn right towards Thomastown and Kelly's Lane. Just off this track are McMichaels and Kelly's Huts. Continue along Kelly's Lane to rejoin the Howitt Road. Head north after 11 km there is a 4km return drive to Dimmicks Lookout which offers excellent views. A further 2km there is small car park on the right and a 500m walk to Guys Hut. Howitt Hut is a further 12km north along the Howitt Road. While another 4km on there is a car park and a 10km walk to reach Valljo Ganter Hut. Allow 2-3 hrs for the walk. This completes the trip to the twelve huts.



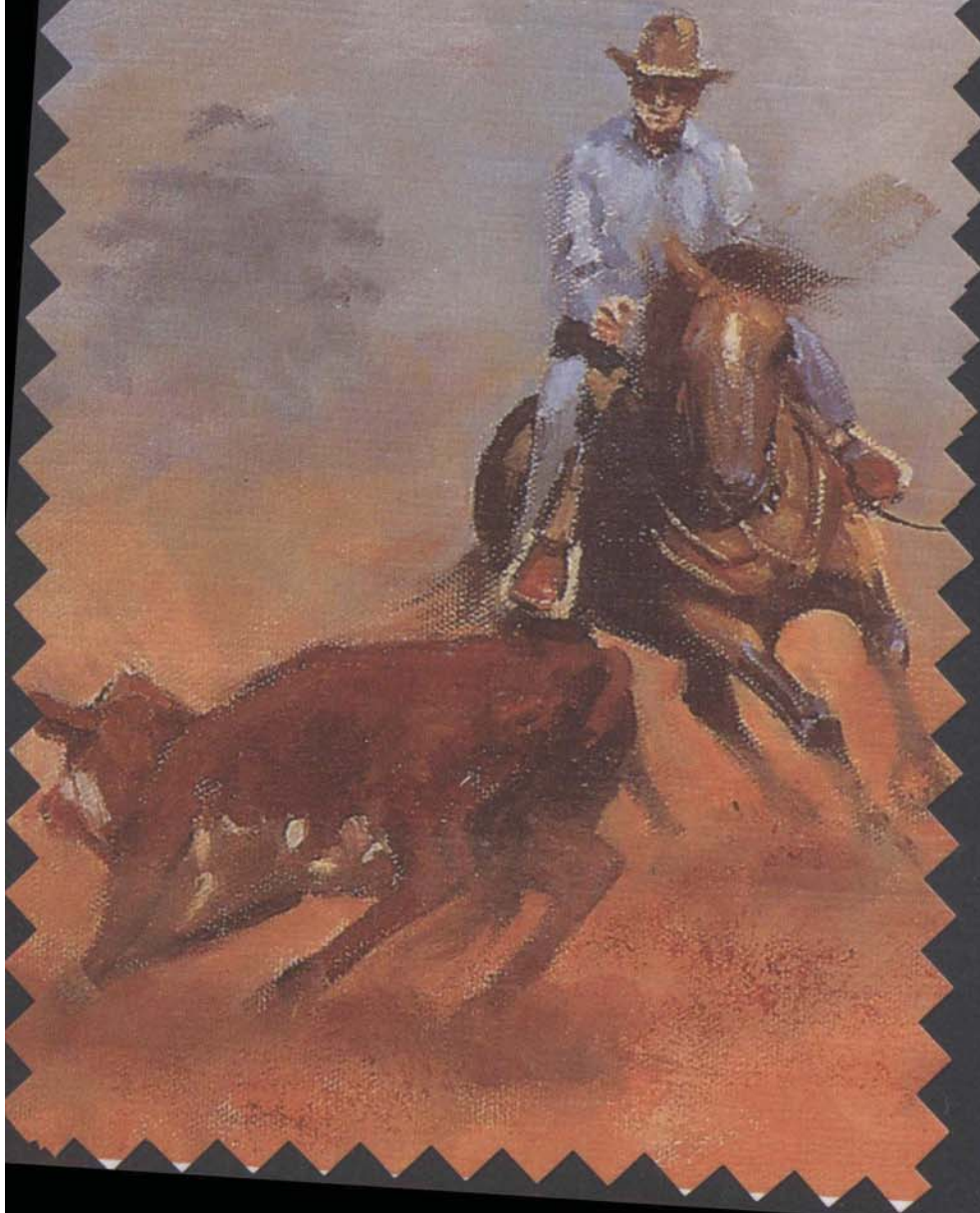


*I love a sunburnt country  
A land of sweeping plains,  
Of rugged mountain ranges  
Of droughts and flooding rains.*

McMichaels' Hut, this hut is thought to have been built in the early 1970s possibly by Bill Cumming, to replace an earlier hut built by bill McMichael. 4 WD access.

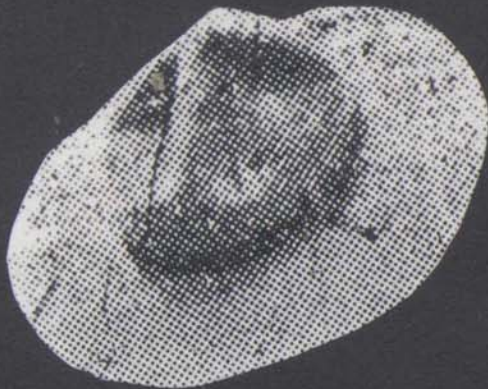


Wellington River Hut, built in the 1970s, possibly  
used by stockmen at the start of their musters.  
2WD access, then a 300m walk, rough 4WD  
access to the hut on the Wellington River.





Dunsmuir Hut, built in the 1960s by Bob & Gavin Dunsmuir, the hut was built in a day, the adjoining hut owned by the Higgins was burnt down in the 1998 Caledonia Fires. Foot access.







Millers' Hut, first built in 1916 by Henry Miller and is the oldest remaining hut in the region. It was refurbished by the Range Rover Club in 1987. It is at the western foot of Mt. Wellington.



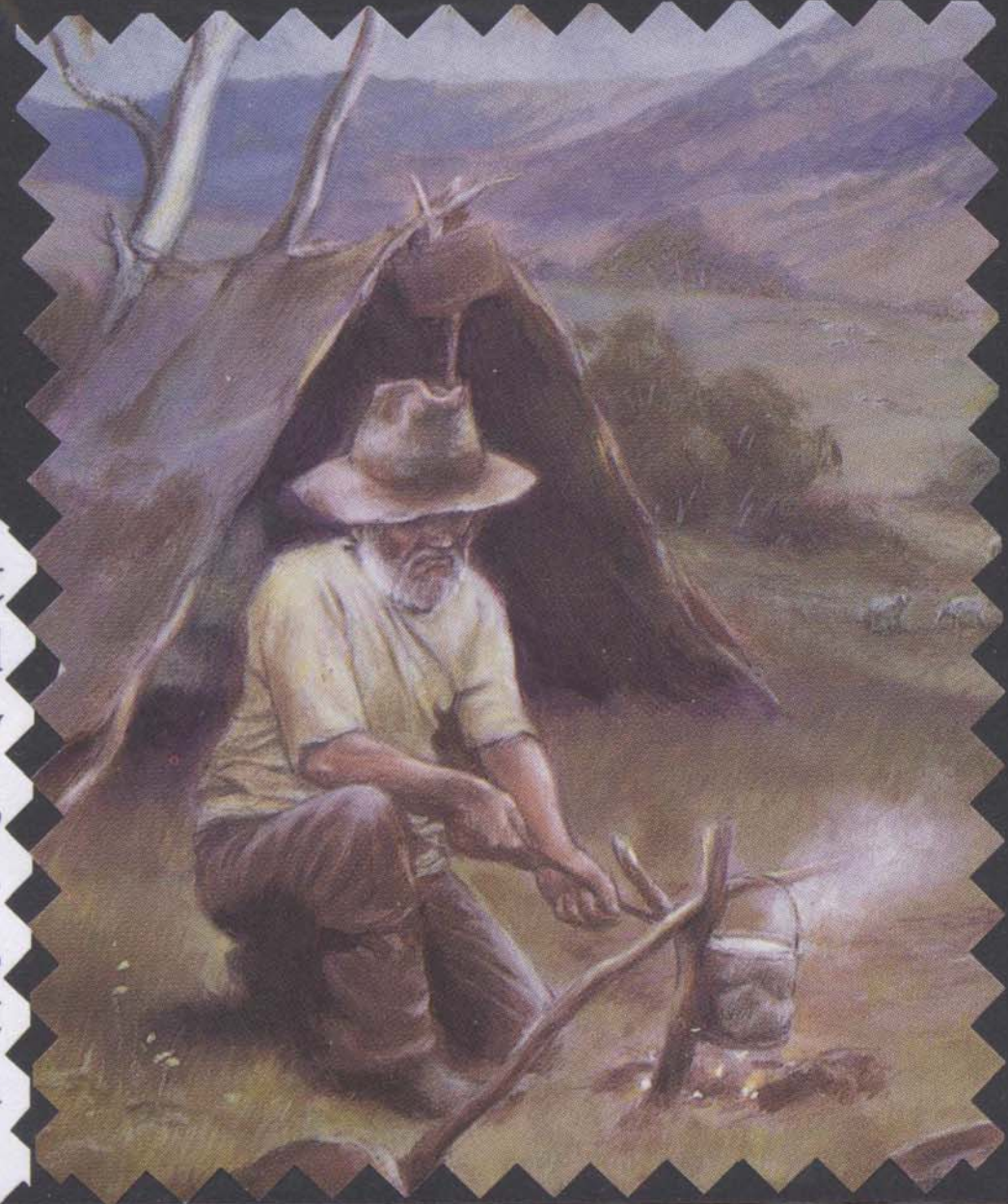




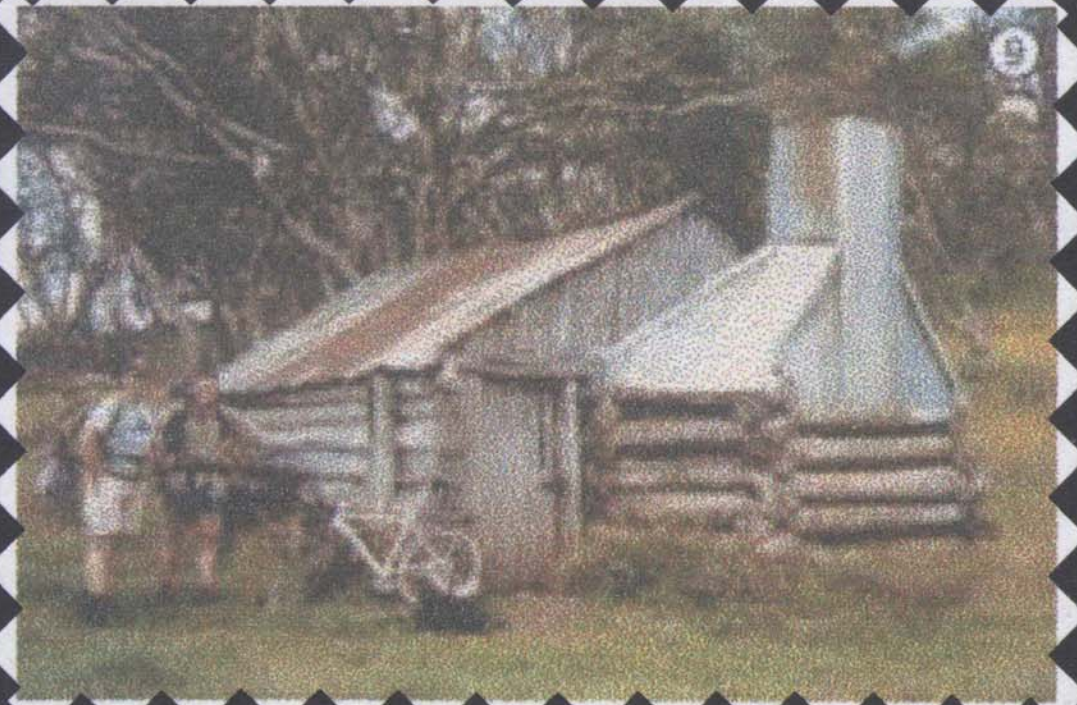
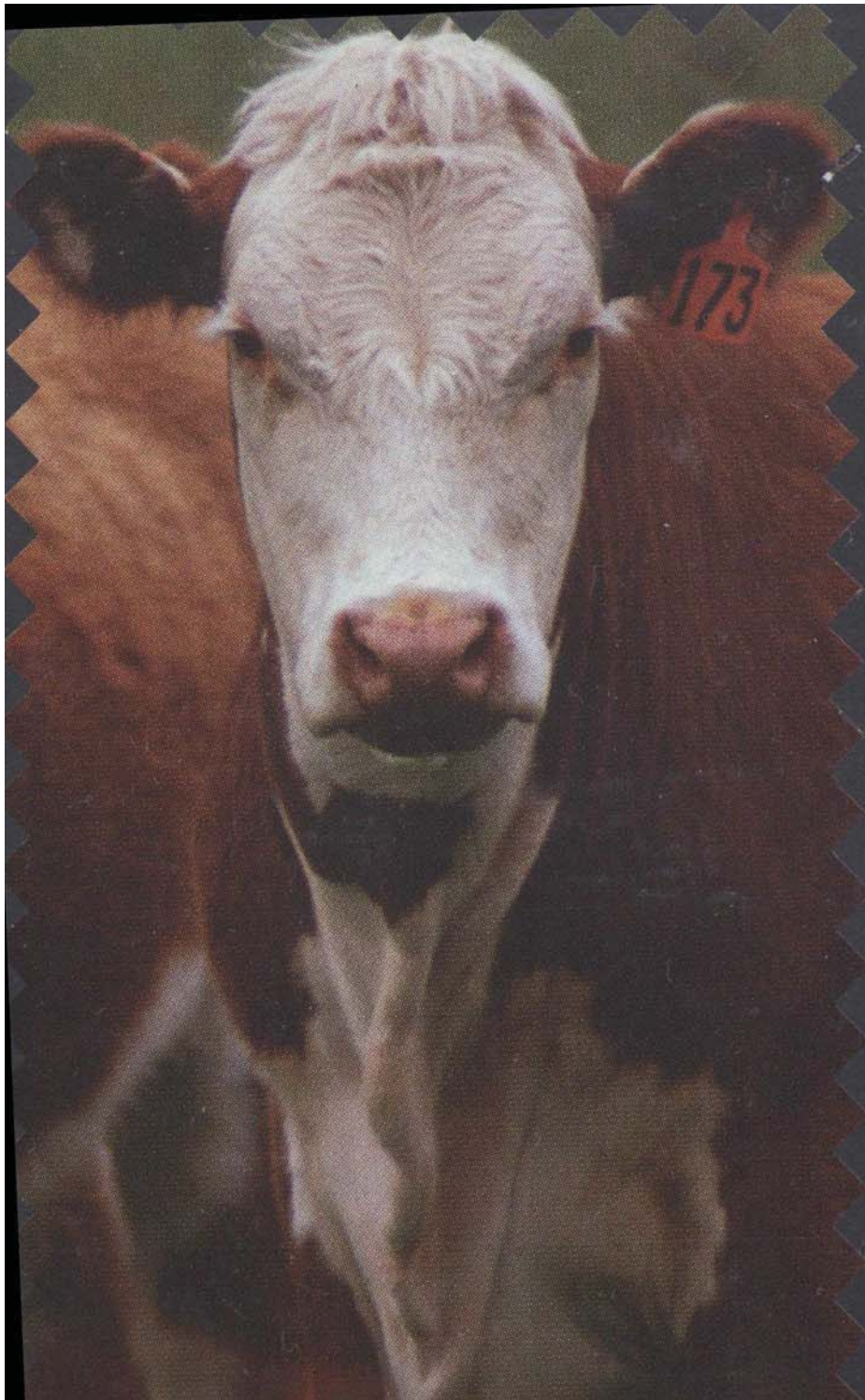
The materials were brought in by packhorse.  
The hut is situated by the Moroka River.

### *MOROKA HUT*

The typical cattlemen's log hut at Moroka was built by Bill Gillio and Andy Estoppey in 1946, helped by the late Eric Bateson and Arch Timbs, who had just returned from the war. Bill Gillio was a renowned bushman, a First World War soldier, and a great axeman, and the Moroka Hut is a monument to his skill.





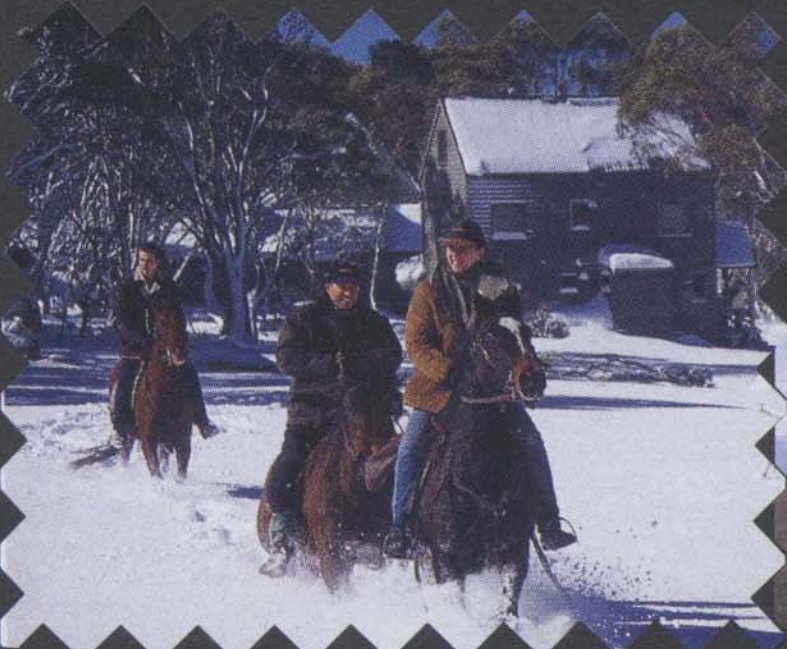


Guys' Hut built by Alex Guy, in 1940 for summer cattle grazing. Walking access for 600m from the Howitt Road.



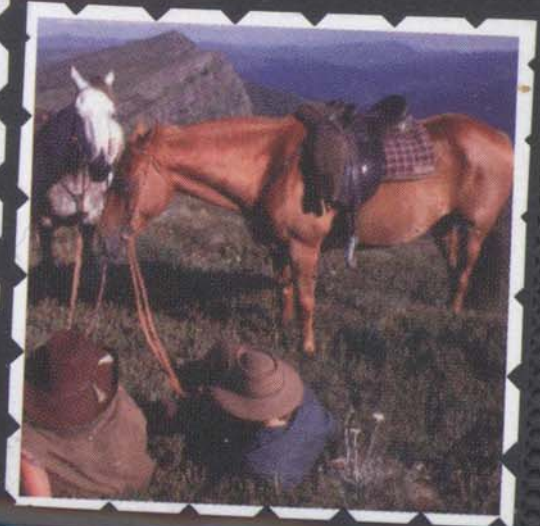


Vallejo Garnter Hut (Macalister Springs), built as a memorial to the Vallejo. It had an official opening on April 17, 1971. Vallejo died in a farm accident in 1962. The hut is one of the few huts that is considered architecturally significant. Foot access.





Howitt Hut it is hard to obtain information exactly when this hut was built, but some time between 1900 - 1930. With early 1920 being the likely date. It is the closest hut to where the body of John Bamford (of Wonnagatta Station) was found. 2WD access.

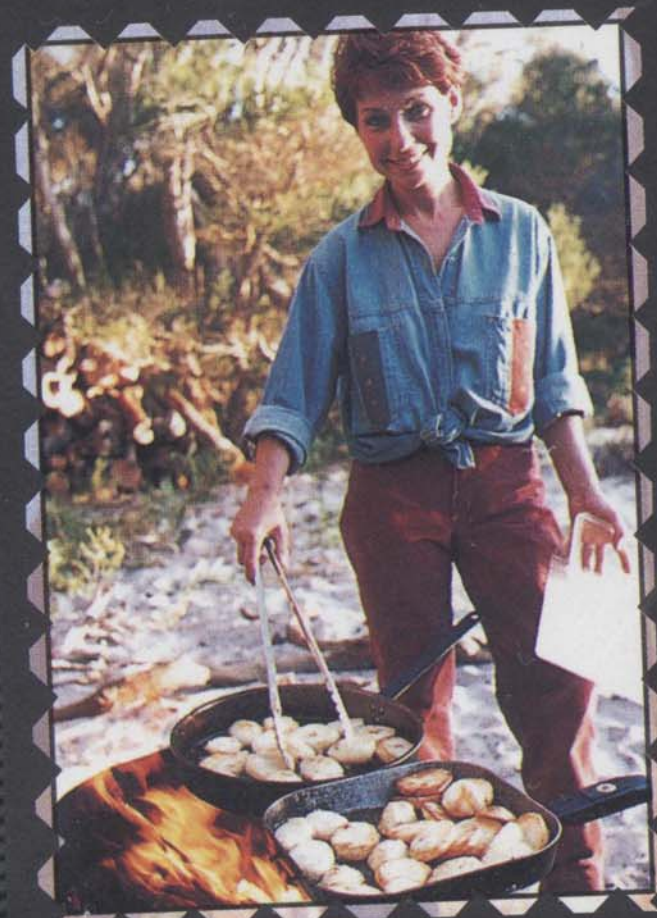




*The food is Australian style tucker, always fresh and guaranteed to hit the spot. Magda's special home made sauces are always there to make the difference. Billy tea, coffee and biscuits*

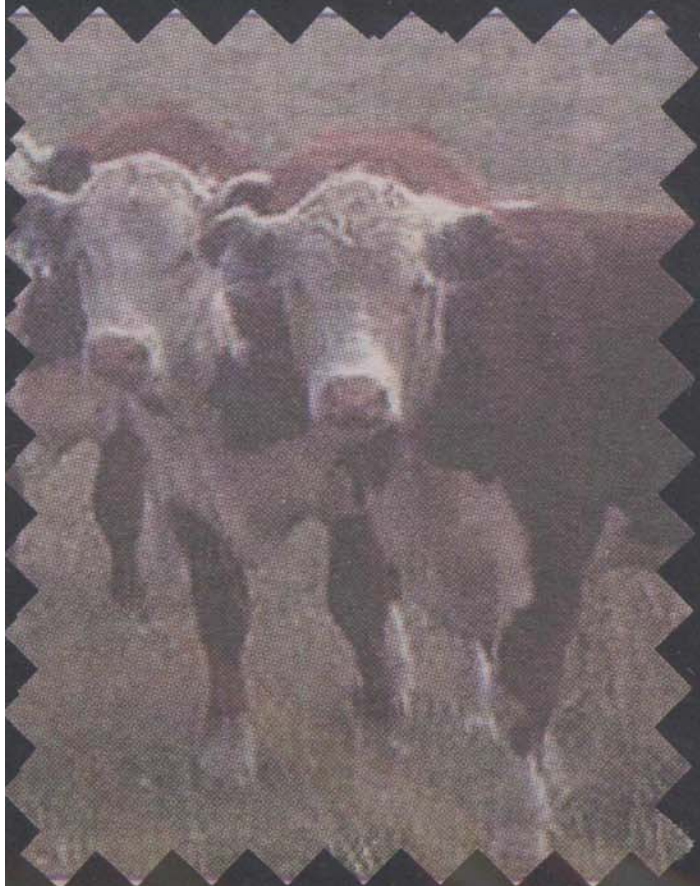


Ross Brown





Andy Estoppey of "Bonnie Doon", Briagolong, at 83 years could be the oldest cattleman still tending cattle and riding the bush, running cattle in Moroka and Freestone Creek. For well over 60 years he has worked with cattle in the mountains, with the Treasures of Dargo and Millers of Wellington.





Ross Brown and family

COAST



RIDER

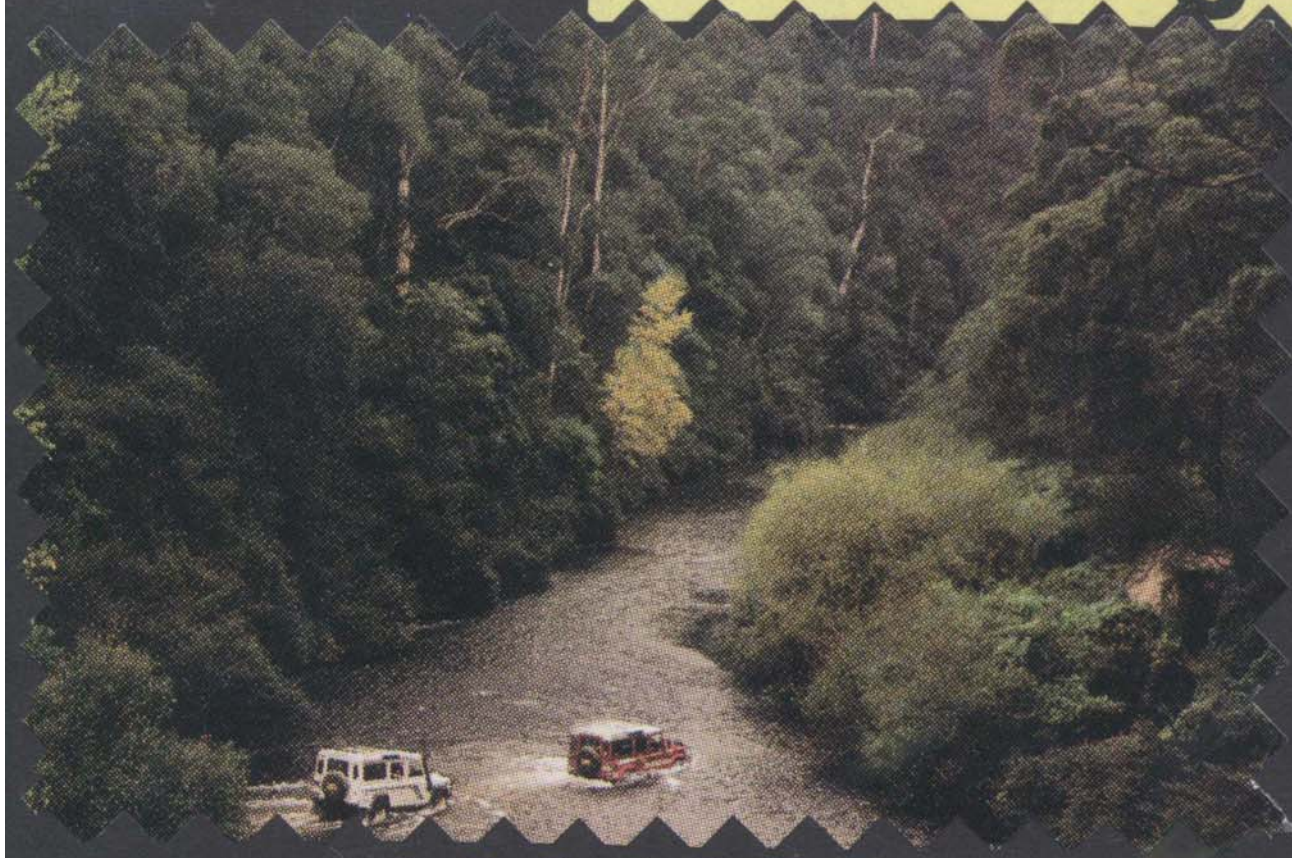


Craig Brown





# Wonnangatta



Its adventurous image & reputation derives largely from a history of having been a cattle station during the 19th century with inhabitants cut off from civilization by snow-capped mountains for six months of the year and the mystery of murder at the "station".



Stuart McMillan Hair, cattleman, early tour guide, bushman and long-time Associate member of the MCAV,



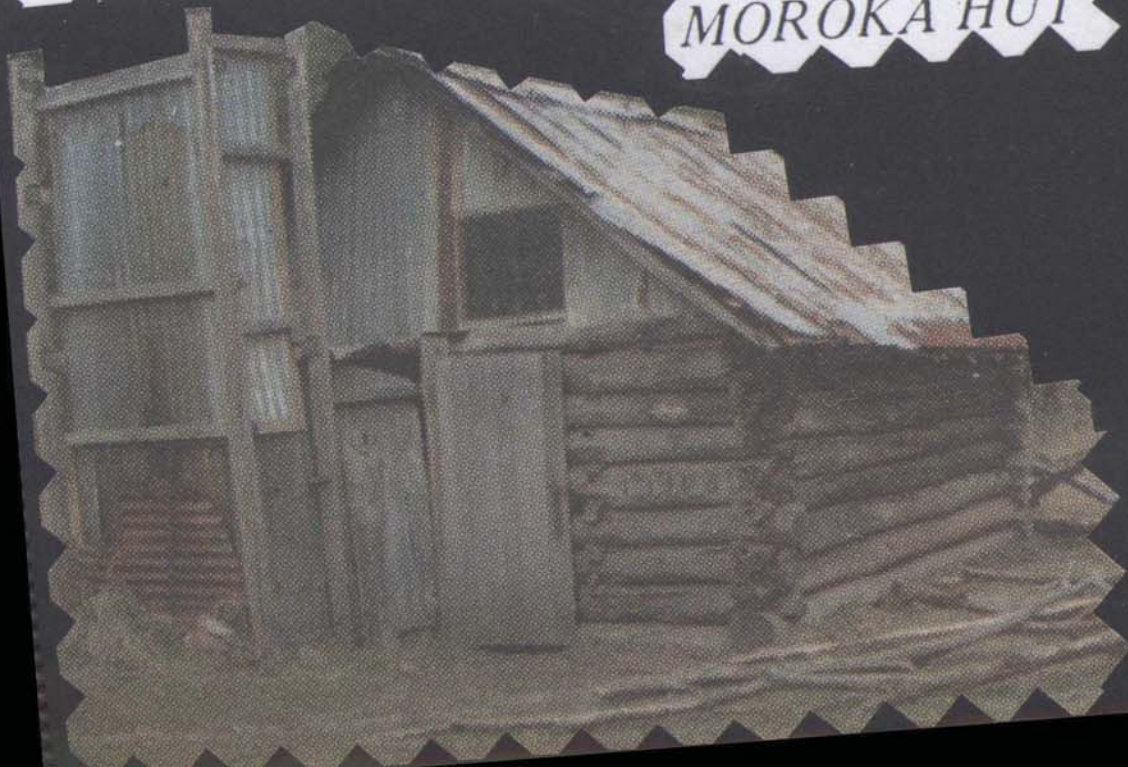
Stuart worked for a time for Harry Treasure of the Dargo High Plains, and then began working with Andy Estoppey from Briagolong. With Andy he packed many a trip for the Melbourne Women's Walking Club and Melbourne Scout Groups. Stuart and Eric Bateson ran the last packhorse trip for the Melbourne Women's Walking Club in 1954. During this time he packed supplies for survey crews before the roads went in, packing from Briagolong to Bennison Plains. Packing rates were six shillings a day per horse, and a pound a day for the man.





The typical cattlemen's log hut at Moroka was built by Bill Gillio and Andy Estoppey in 1946, helped by the late Eric Bateson and Arch Timbs, who had just returned from the war. Bill Gillio was a renowned bushman, a First World War soldier, and a great axeman, and the Moroka Hut is a monument to his skill.

### MOROKA HUT



*Bill Gillio leading pack-horse over Mt Stirling in 1935.*



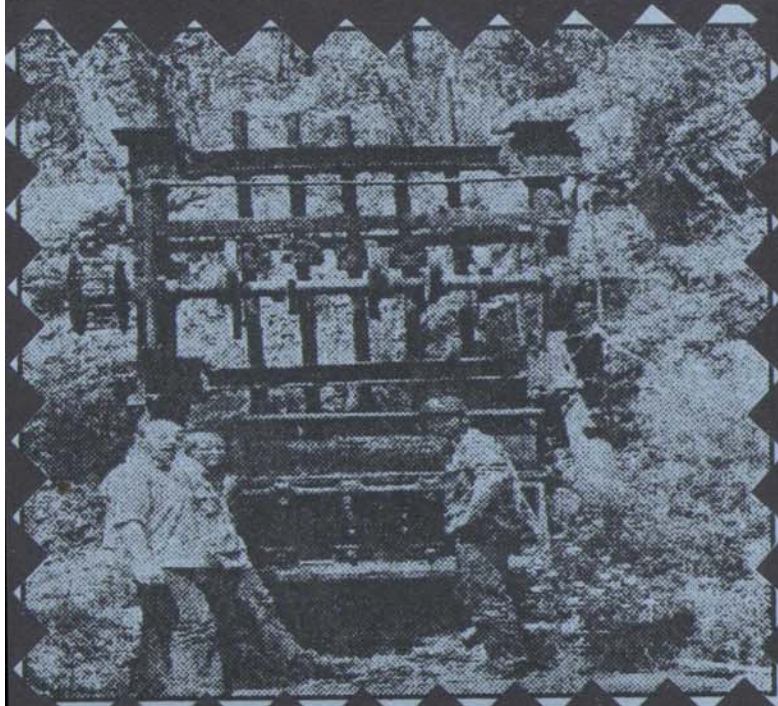
One of the most beautiful places in Victoria, the isolation of the green fertile valley through which the Wonnangatta River flows free, remains as a remarkable tribute to pioneer pastoralists who bought their families, cattle and sheep across the rugged mountains as early as 1862.



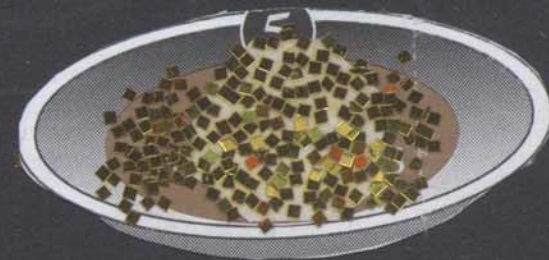
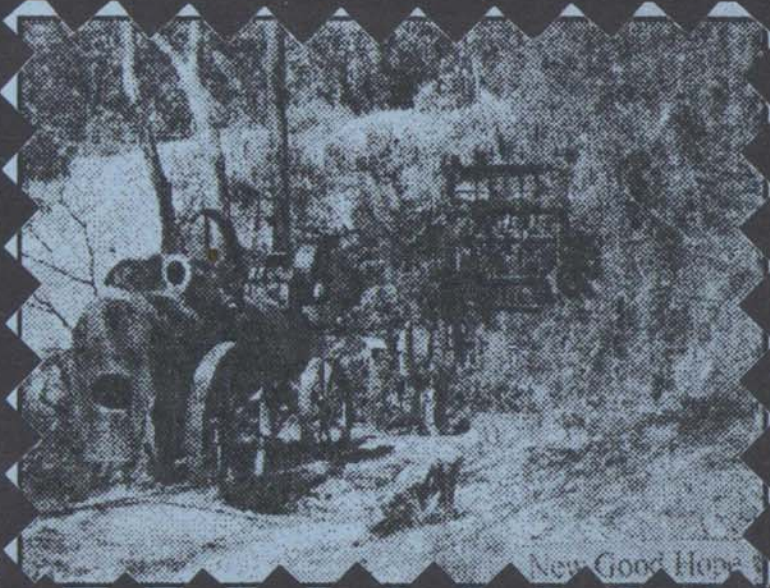


# Grant Victorias forgotten goldfields

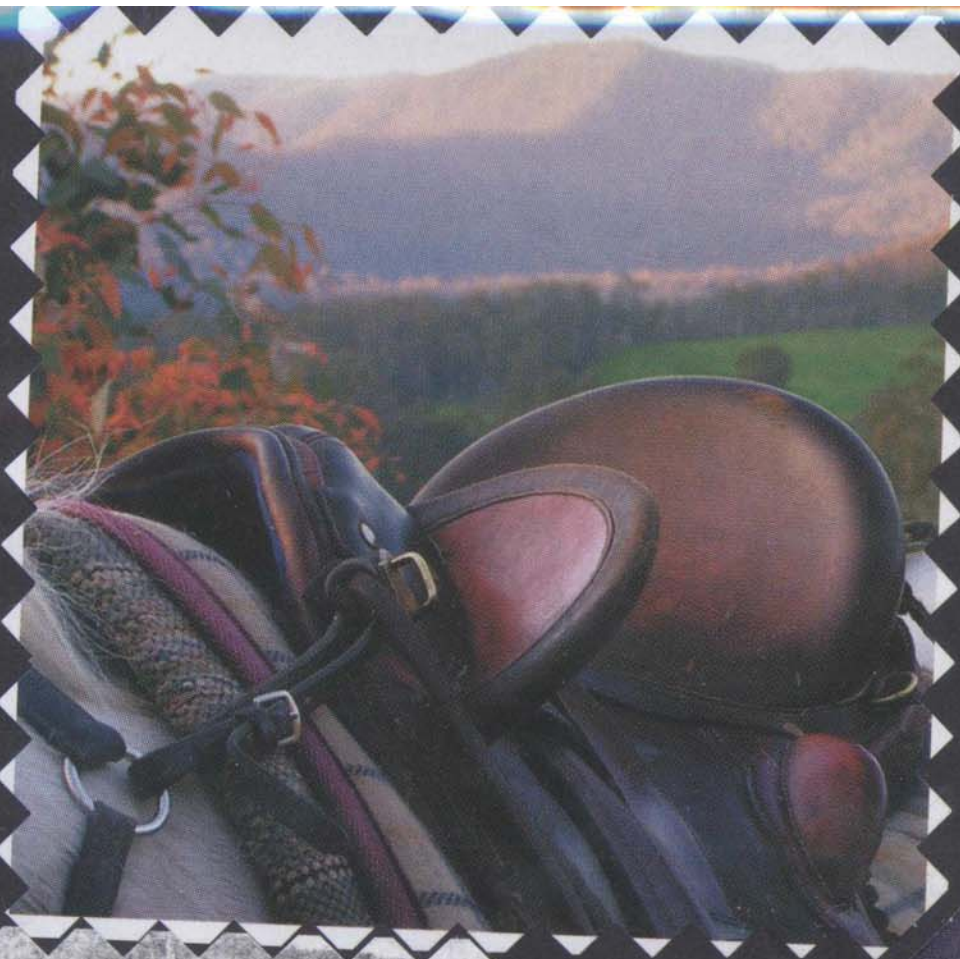
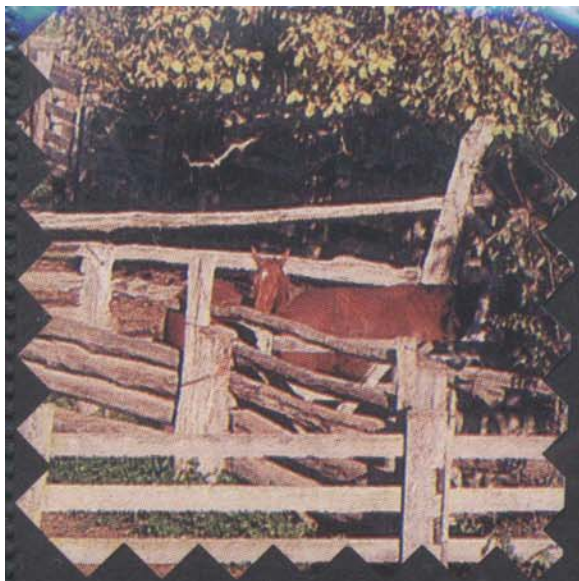
The nearby Grant cemetery still has gravesites and headstones for many of the diggers who died searching for their golden fortune.



Grant, situated deep in the mountains was once a mining town with 3000 diggers and 15 hotels. Today only a layout of the ghost streets remains to evoke those heady days.









Lake Tarli Karn is beyond Licola in the beautiful Alpine National Park where the scenery and views of the Australian bush cannot be surpassed.

